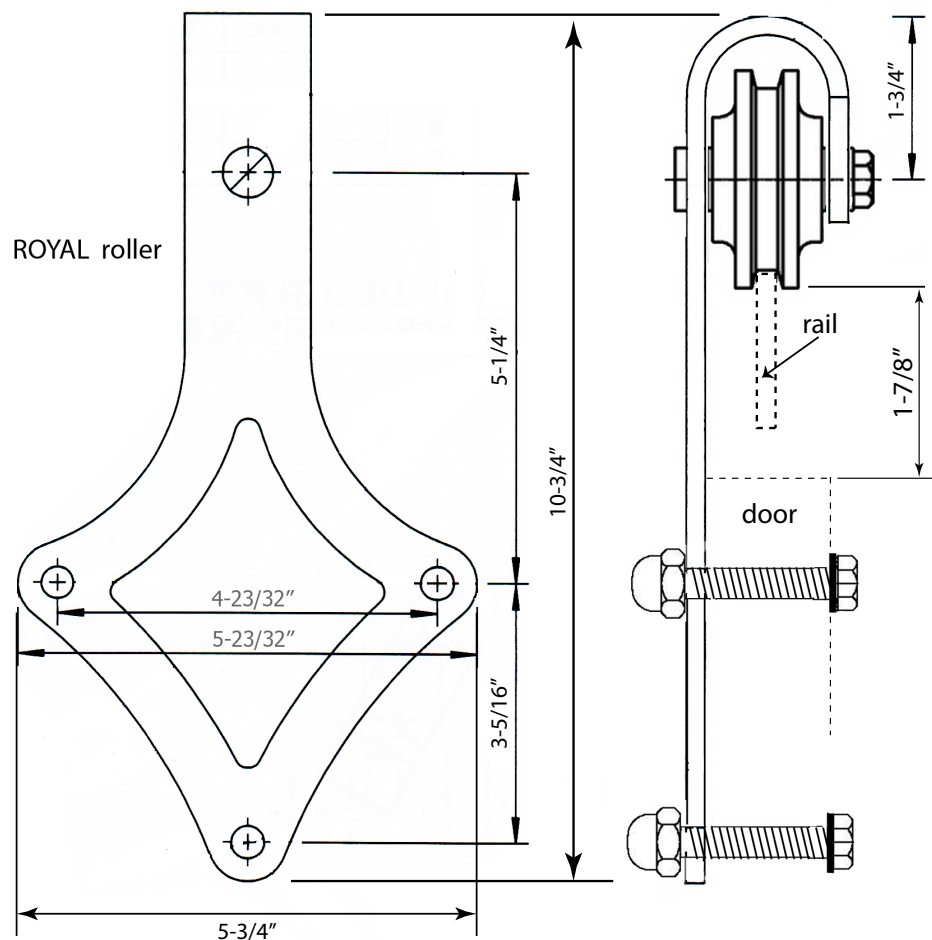
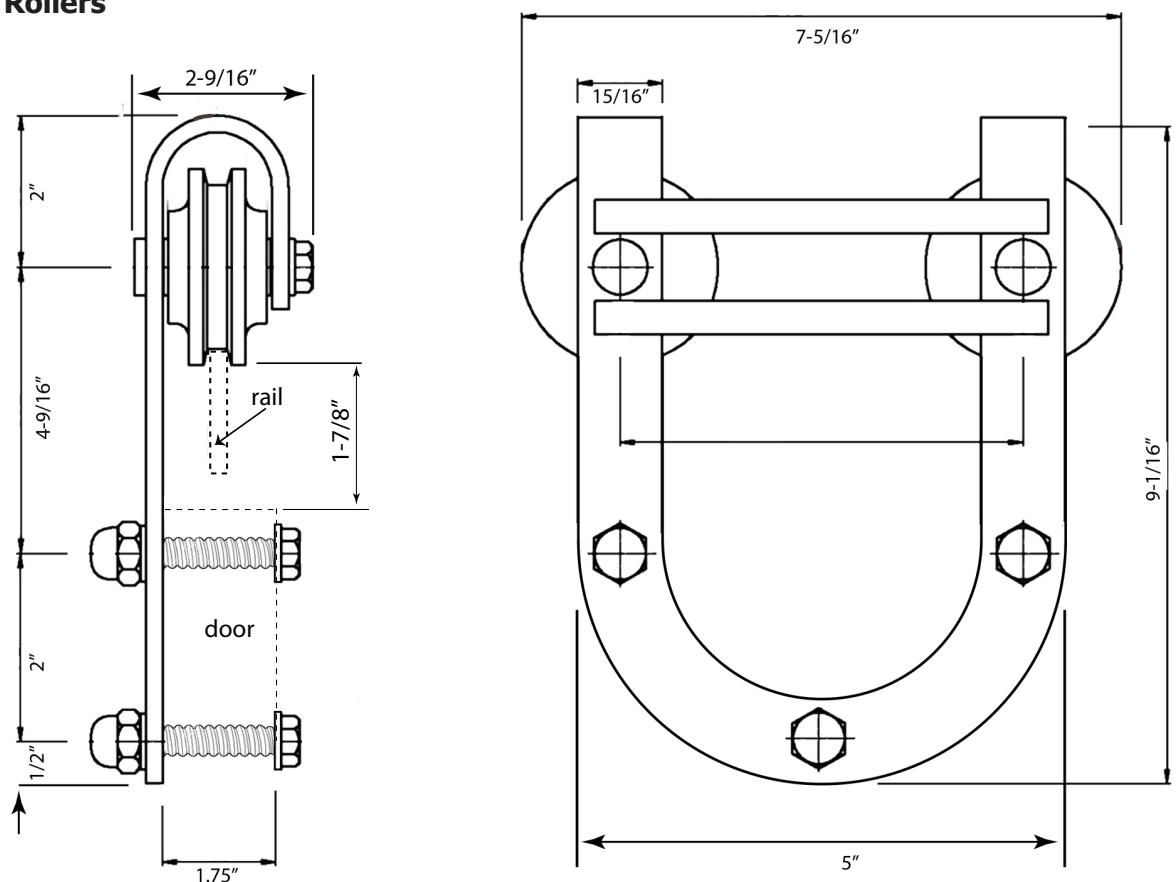


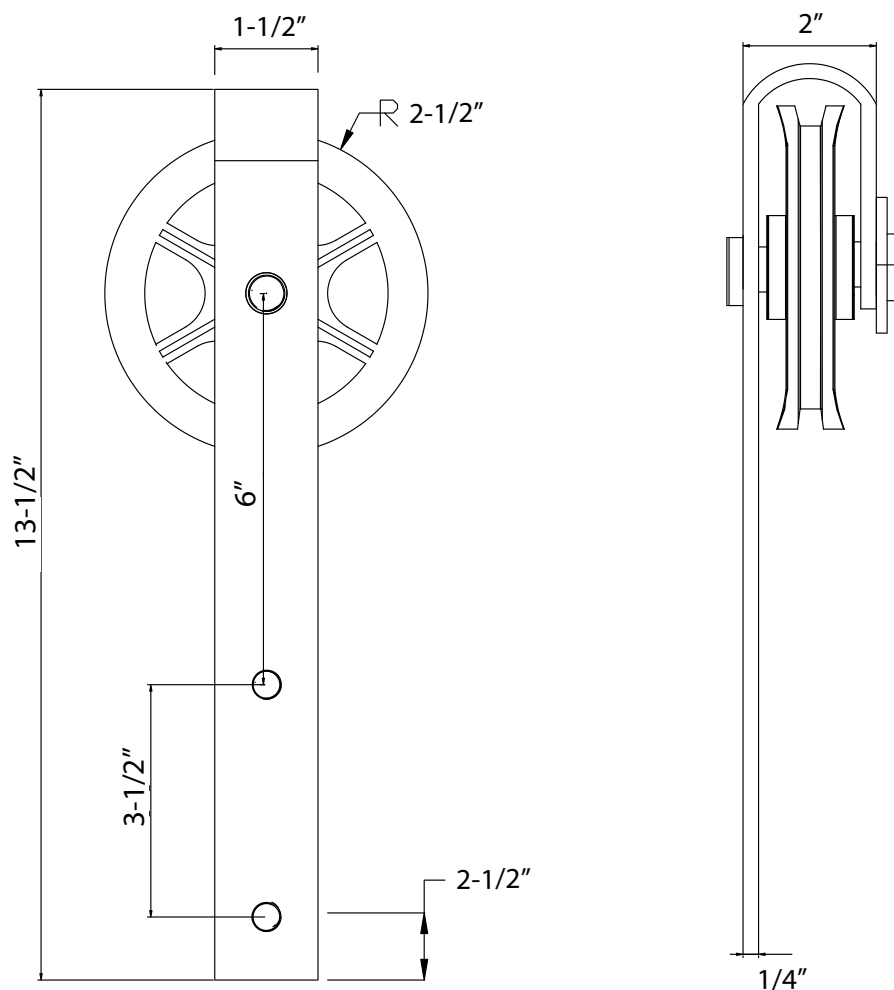
Royal Door Rollers



Waggoner Door Rollers



Vintage Rollers



Product Information & Pricing: **BarnCraft™ Hardware & Options**

Rolling door hardware & options for the BarnCraft Door Series are included in our BarnCraft Rolling Doors & Hardware Catalog, and Price List, and have the following specifications*:

- 1) We offer 8 Rolling Door hardware kits. 6 options in black and 2 designs in stainless steel.
- 2) Each kit includes all necessary hardware for one single rolling door installation. Not included is wood door header and header fasteners.
- 3) Each kit is packed in at least 2 boxes.
- 4) Metal door handles may be "touched up" with any exterior grade metal paint, such as Rustoleum™ if needed.
- 5) Kits include the rolling door rail.
- 6) All rolling door hardware is black in color, except for 2 stainless steel options. Hardware may be painted by the end user if desired.

BarnCraft Rolling Hardware



GAGE
79=17.95 lbs
90= 19.40 lbs
100=20.10 lbs



GAGE-Stainless Steel
79=17.95 lbs
90= 19.40 lbs
100=20.10 lbs



SLADE
79=17.95 lbs
90= 19.40 lbs
100=20.10 lbs



SLADE-Stainless Steel
79=17.95 lbs
90= 19.40 lbs
100=20.10 lbs



WAGGONER
79=17.95 lbs
90= 19.40 lbs
100=20.10 lbs



ROYAL
79=17.95 lbs
90= 19.40 lbs
100=20.10 lbs



PHILMONT
79=17.95 lbs
90= 19.40 lbs
100=20.10 lbs



VINTAGE
79=17.95 lbs
90= 19.40 lbs
100=20.10 lbs

Steel Rails are heavy-duty 1/4" (nominal) inch thick steel rails. Available in black, or stainless steel, and in 2 lengths depending upon the door width: 78-3/4" and 100". See page 2 for more information on these rail lengths.

** All specifications, product designs and information listed are subject to change without prior notice.
We are continually improving our products, and these improvements may cause us to change the specifications listed.*

