

Product Specifications: **BarnCraft® Sliding Door Hardware & Kits**

Sliding door hardware & options for the BarnCraft Door Series are included in our BarnCraft Sliding Doors & Hardware Catalog, and have the following specifications:

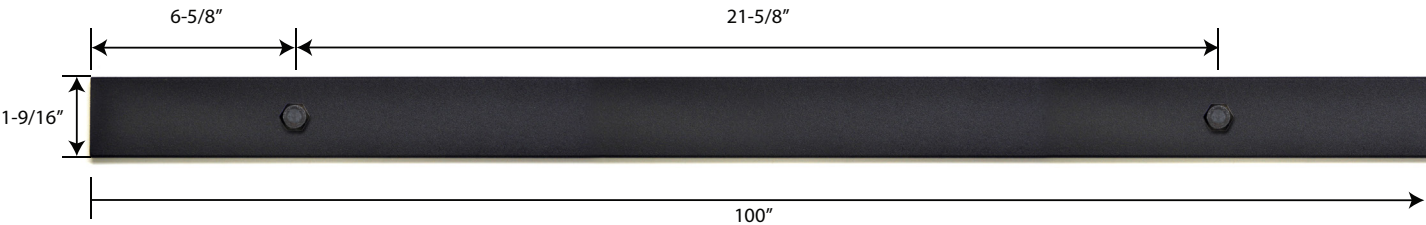
- 1) We offer 8 Sliding Door hardware kits. 6 roller options with a 1/4" nominal thickness, are black, powder coated steel, while Gage and Slade are also available in stainless steel. Nominal dimensions for the rollers are shown on the next 3 pages. These are hand-made products, and the dimensions may vary slightly. All roller wheels are produced using a high durometer nylon and are considered "quiet-glide".
- 2) Each kit includes all necessary hardware for one single sliding door installation. Included rails are available in 2 lengths, and in black or stainless steel. Not included is wood door header and header fasteners.
- 3) Each kit is packed in at least 2 boxes.
- 4) Metal door hardware may be "touched up" with any exterior grade metal paint, such as Rustoleum™ if needed.
- 5) Hardware may be painted by the end user if desired.

Installation Note:
For correct installation, the distance from the bottom of the roller wheel to the top edge of the door must be 1-7/8".

Design Options:

 <p>GAGE #BDHA02 KIT w/ 100" Rail: #BDHA02K100 KIT w/ 78³/₄" Rail: #BDHA02K78</p>	 <p>SLADE #BDHA01 KIT w/ 100" Rail: #BDHA01K100 KIT w/ 78³/₄" Rail: #BDHA01K78</p>	 <p>SLADE Stainless Steel #BDHA01SS KIT w/ 100" Rail: #BDHA01SSK100 KIT w/ 78³/₄" Rail: #BDHA01SSK78</p>	 <p>PHILMONT #BDHA05 KIT w/ 100" Rail: #BDHA05K100 KIT w/ 78³/₄" Rail: #BDHA05K78</p>
 <p>GAGE Stainless Steel #BDHA02SS KIT w/ 100" Rail: #BDHA02SSK100 KIT w/ 78³/₄" Rail: #BDHA01SSK78</p>			
 <p>WAGGONER #BDHA03 KIT w/ 100" Rail: #BDHA03K100 KIT w/ 78³/₄" Rail: #BDHA03K78</p>	 <p>ROYAL #BDHA06 KIT w/ 100" Rail: #BDHA06K100 KIT w/ 78³/₄" Rail: #BDHA06K78</p>	 <p>VINTAGE #BDHA07 KIT w/ 100" Rail: #BDHA07K100 KIT w/ 78³/₄" Rail: #BDHA07K78</p>	

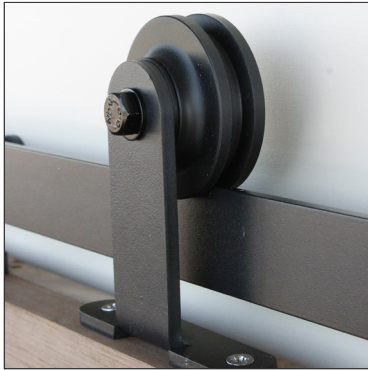
Steel Rails are heavy-duty 1/4" (nominal) inch thick steel rails. Available in black, or stainless steel, and in 2 lengths depending upon the door width: 78-3/4" and 100". See page 2 for more information on these rail lengths.



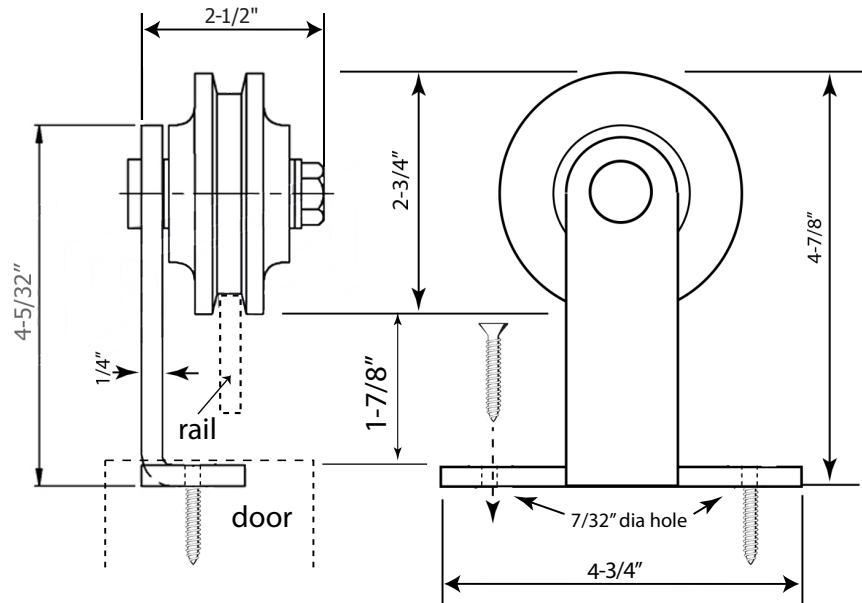
* All specifications, product designs and information listed are subject to change without prior notice.
We are continually improving our products, and these improvements may cause us to change the specifications listed.

Product Specifications: **BarnCraft® Rollers**

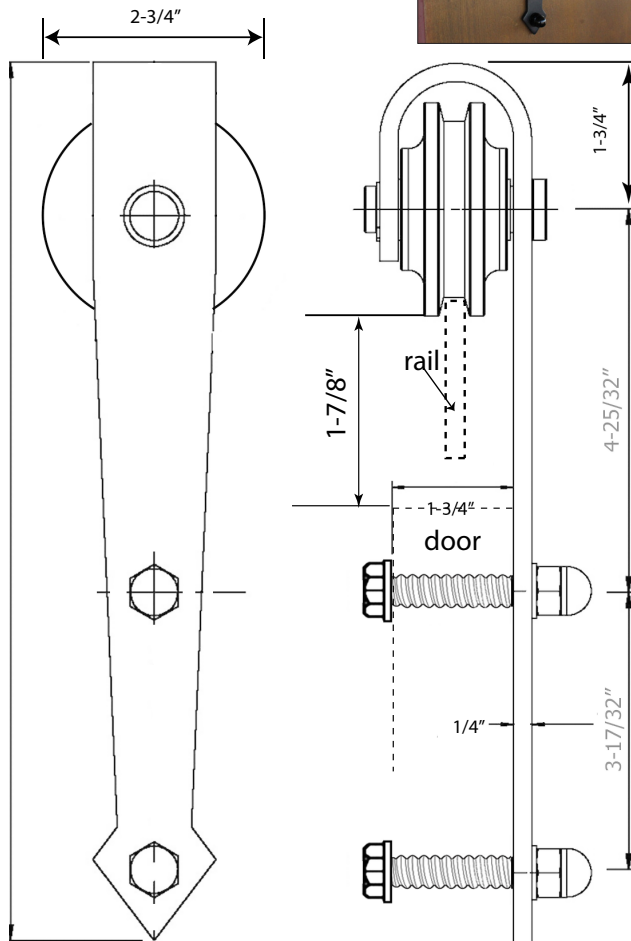
Gage Door Rollers



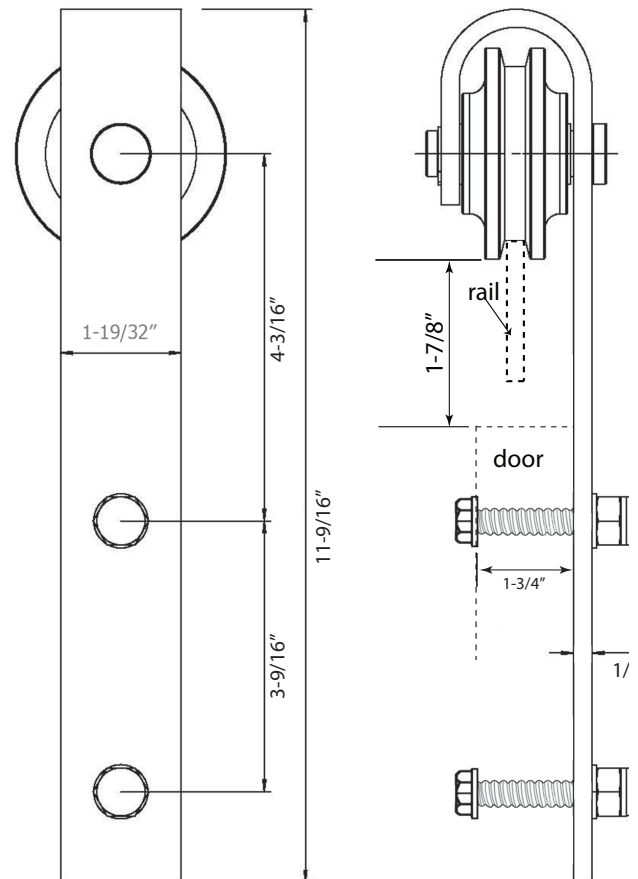
Note: Gage rollers are designed to be recessed into the top edge of the door.



Philmont Door Rollers



Slade Door Rollers

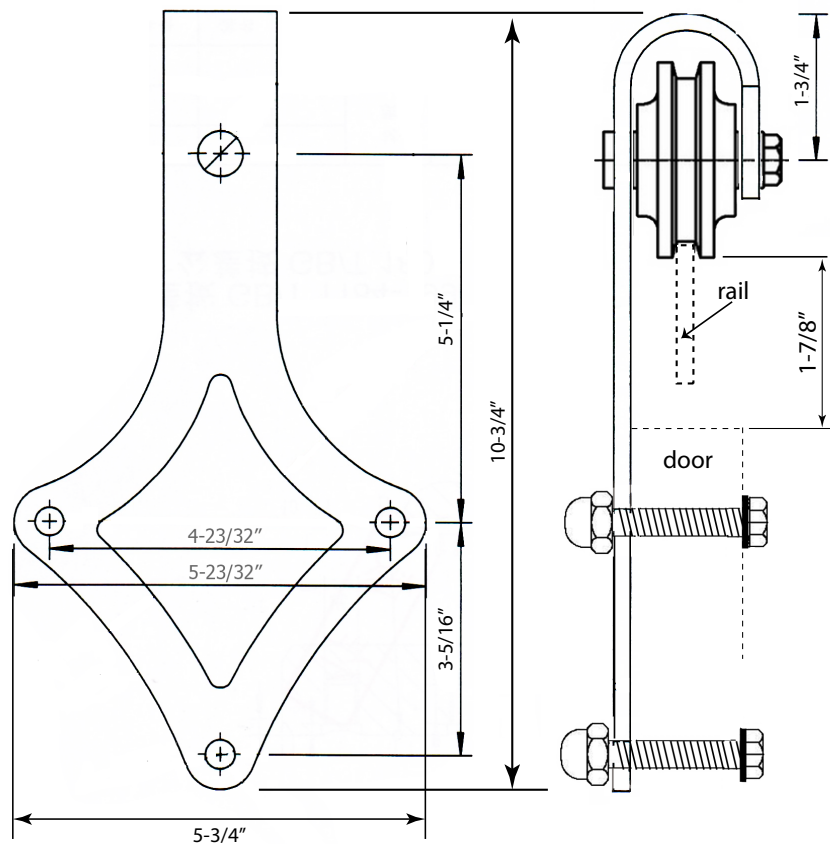


Installation Note:

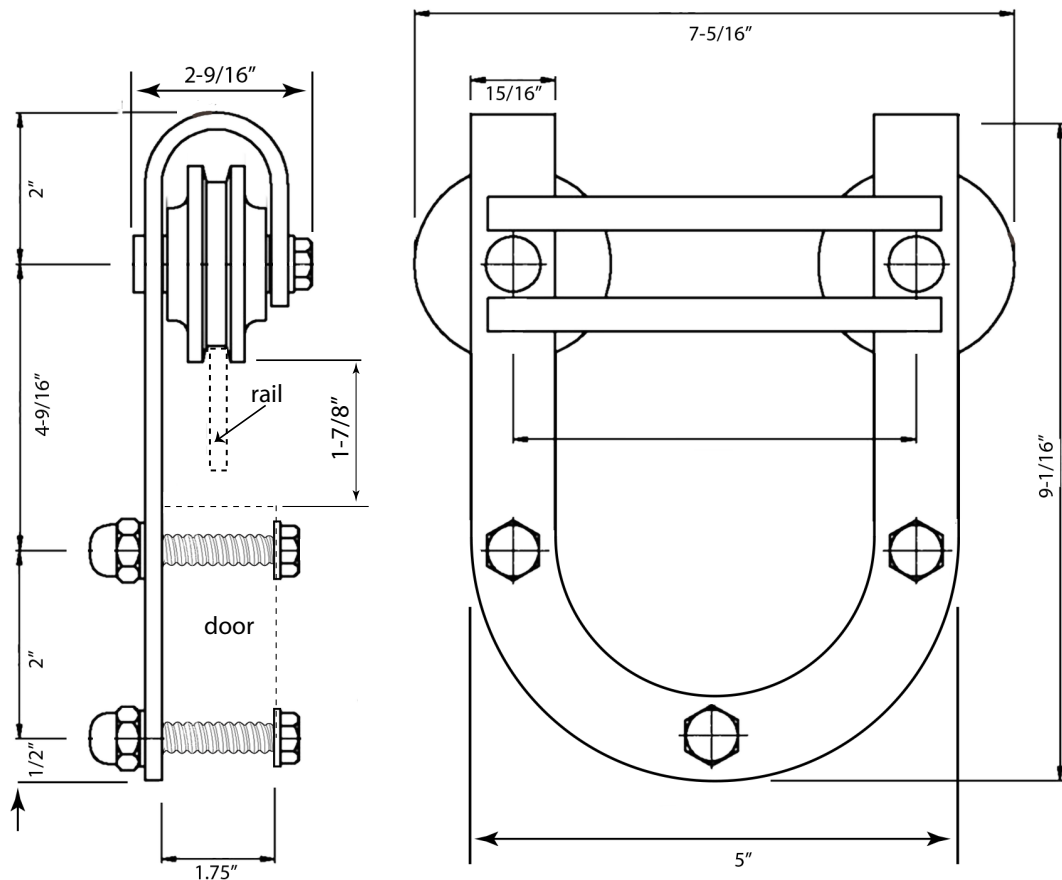
For correct installation, the distance from the bottom of the roller wheel to the top edge of the door must be 1-7/8".

Product Specifications: **BarnCraft® Rollers**

Royal Door Rollers

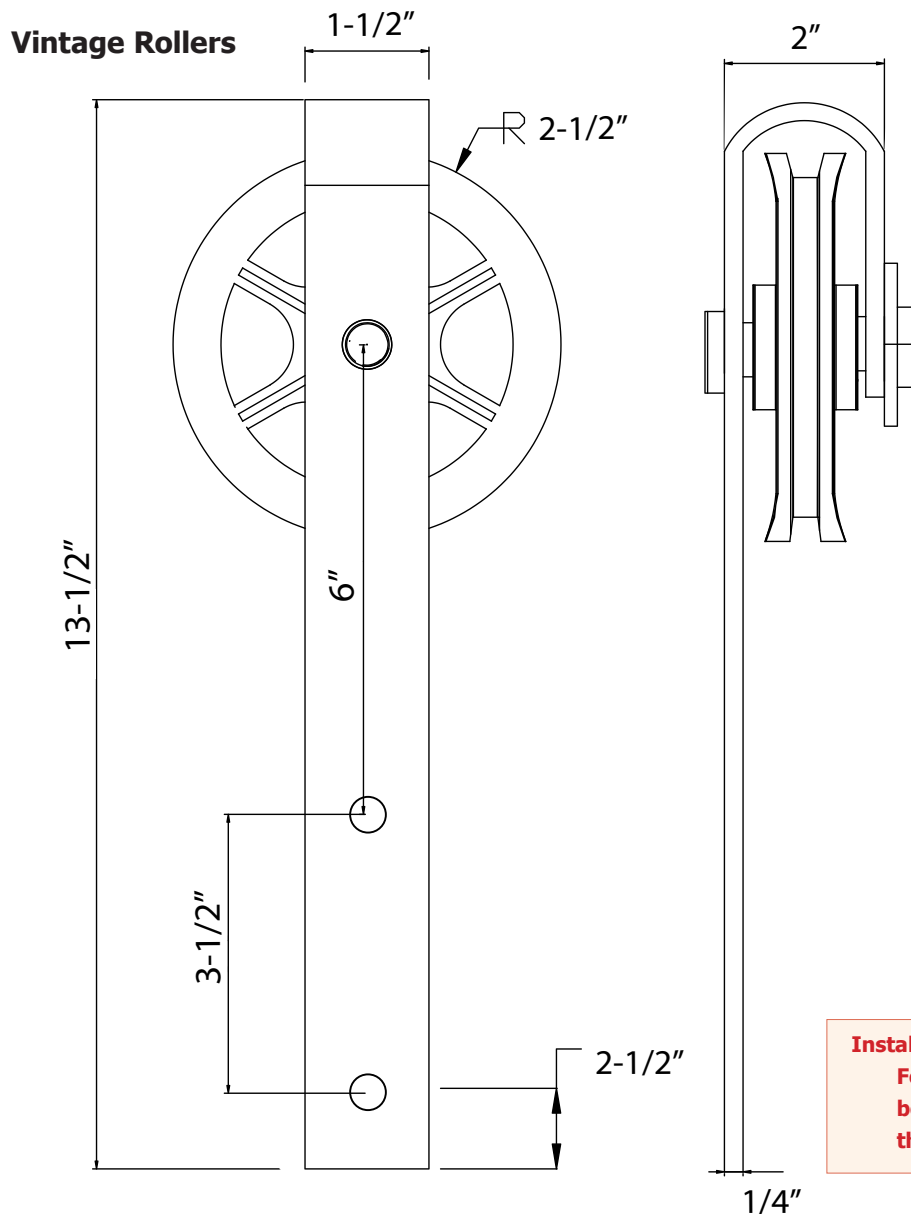


Waggoner Door Rollers



Installation Note:
For correct installation, the distance from the bottom of the roller wheel to the top edge of the door must be 1-7/8".

Product Specifications: **BarnCraft®** Rollers



Installation Note:

For correct installation, the distance from the bottom of the roller wheel to the top edge of the door must be 1-7/8".

Header Board Option

Knotty Alder Headers

We strongly suggest that the Sliding Door hardware be installed using a solid wood header board. This provides a potentially stronger and more secure installation. The photo at right shown an installation using a header board.

The header board is mounted to the wall, with fasteners (not supplied) screwed through the header board and into wall studs.

Then the sliding door hardware is mounted directly to the header board.

This makes installation potentially stronger and easier, as the holes in the steel rail will rarely align to existing wall studs.

BarnCraft Header Length Options: 80", 108"

