

Installation Guide

Pre-hung Steel Interior Door Units:

- Steel frame and door with 4mm tempered glass
- SDL 4-Lite bars are 8.5mm (5/16") wide
- RH and LH swing options
- Frame is 30mm (1-9/16") square, with door stop extending to 40mm
- Door is 25mm thick
- 3 Pin hinges on 6-8 door / 4 Pin hinges on 8-0 door
- Operable handleset included
- Spring-loaded latch (no lock)
- Felt bumper on door stop included
- Glass options are Clear and Cloud
- Unit height is adjustable
- Individually boxed
- Single and pallet pricing available
- Preorders accepted, and will ship first



Parts Included -



(11) Plugs, (11) Wall Inserts, (11) Wood Screws, (2) replacement metal screws, (2) Plastic Plugs, Cover-Strip Material (peel-n-stick)



(2) Door Handles



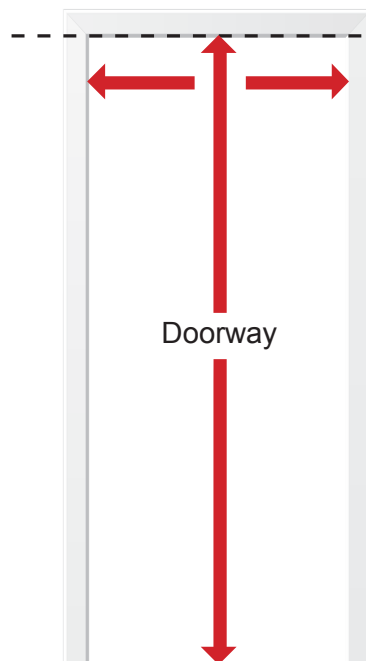
(1) Door Handle Kit w/Allen Wrench

1. Preparation -

1. Remove the existing interior door from the opening, including hinges and latch strikes.
2. Remove any bumpers, pads, or accessories attached to the existing interior jamb.
3. **Verify that the existing interior jambs are plumb and level.**
4. Shimming may be required to ensure proper fit of the metal door unit.



A. Remove old door.



B. Measure the opening of the doorway.



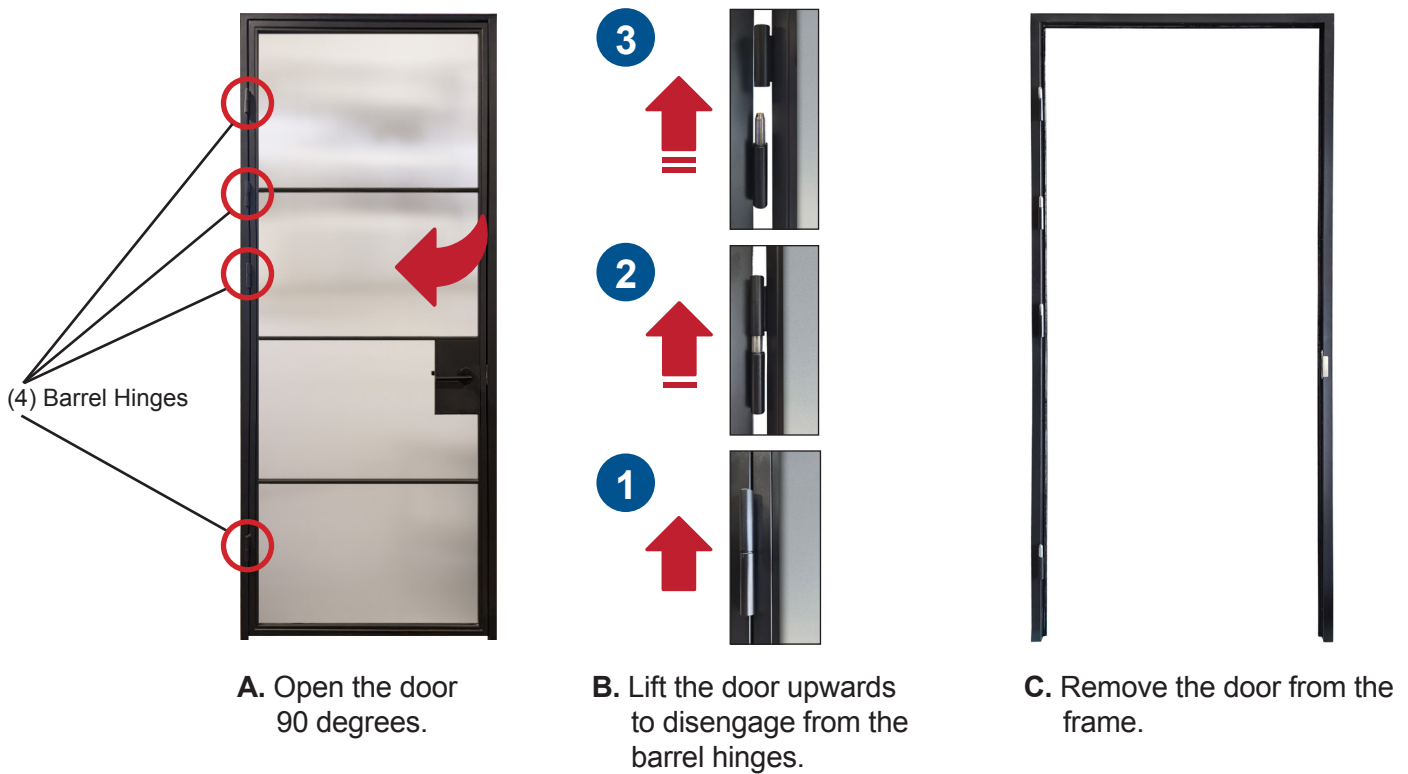
C. Make certain the steel door measurements match up with the doorway measurements.

2. Verify Opening Size -

1. Measure the width of the opening between the existing interior jambs at the top, middle, and bottom.
2. **Confirm the opening width matches the metal interior unit.**
3. Measure the height of the opening from the finished floor to the inside of the header on both left and right sides.
4. **Confirm the opening height matches the metal interior unit.**

3. Unpacking and Door Removal -

1. With two people, remove the metal interior unit from the packaging.
2. Securely stand or lay the unit flat on a fully supported surface with the hinges facing up/outward.
3. Open the door to 90 degrees and disengage the half-barrel hinges by lifting the door upward.
4. Remove the metal door from the frame and place the door in a safe, protected location.



4. Adjusting Frame Height -

1. Insert the (2) supplied plastic plugs into the bottom of the metal frame.
2. Using the measured jamb height, measure down from the top of the metal frame and mark the plastic plugs.
3. **Allow an additional 1/16" clearance to prevent an overly tight fit**
4. Cut the plastic plugs by hand using a hacksaw to the required length.
5. Reinsert the trimmed plastic plugs into the bottom of the metal frame.

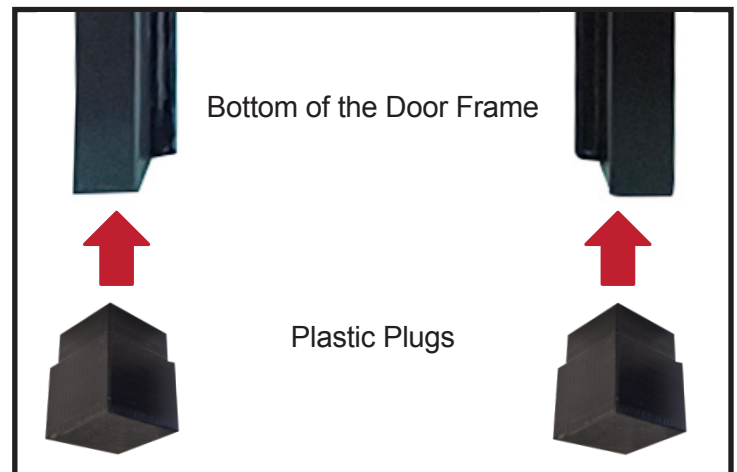
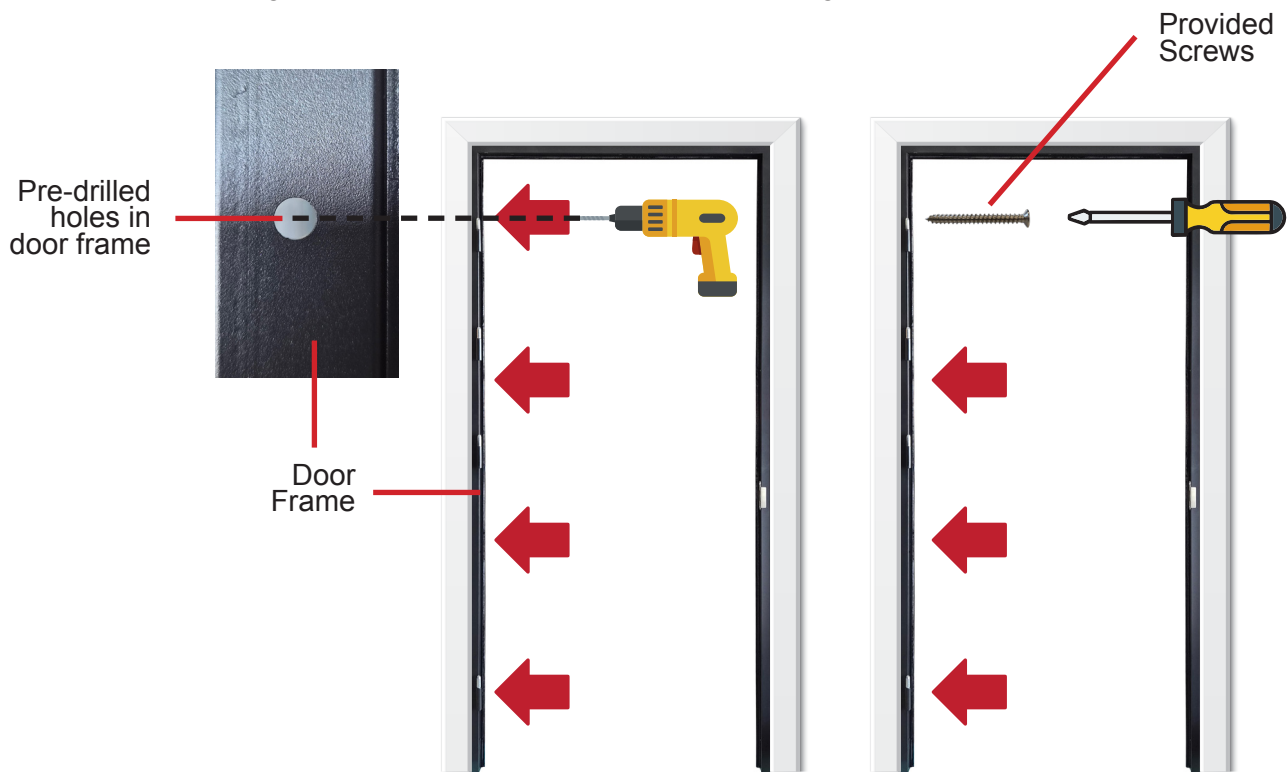


Image not to scale.

IMPORTANT: The plastic plugs are made of dense material. Do not use power tools to cut the plugs. Power cutting may cause the plugs to shatter and could result in injury.

5. Installing the Frame -

1. With two people, stand the metal frame upright and place it into the existing jamb opening.
2. Push the metal frame firmly against the existing door stop.
3. Starting on the hinge side, predrill screw holes and fasten the metal frame to the existing jamb.
4. Shim as necessary.
5. Ensure the hinge side is plumb and level before continuing.



A. Insert door frame into the jamb and pre-drill holes.

B. Attach door frame to hinge-side of the Door Jamb.

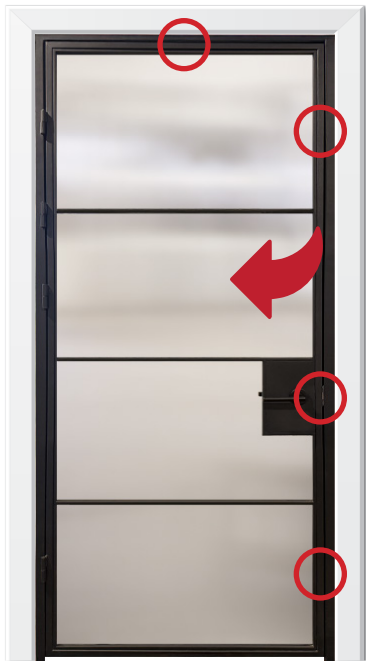
6. Installing the Door -

1. With two people, reinstall the metal door onto the half-barrel hinges.
2. Verify the door swings freely and that all hinges are properly engaged.

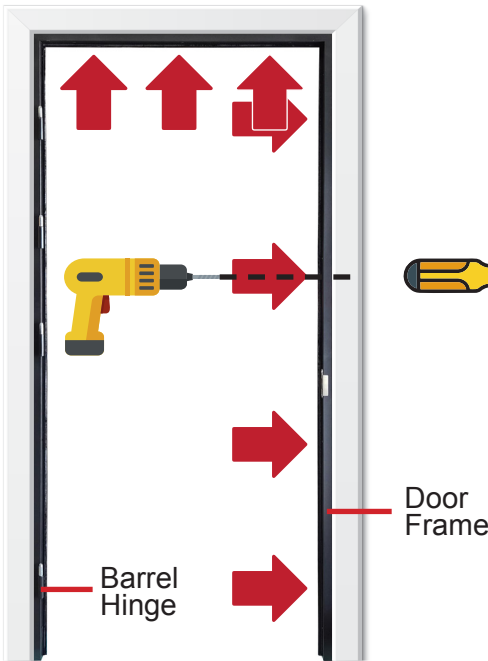
IMPORTANT: Improper hinge alignment may bend hinge pins and affect door operation.

7. Final Frame Adjustment -

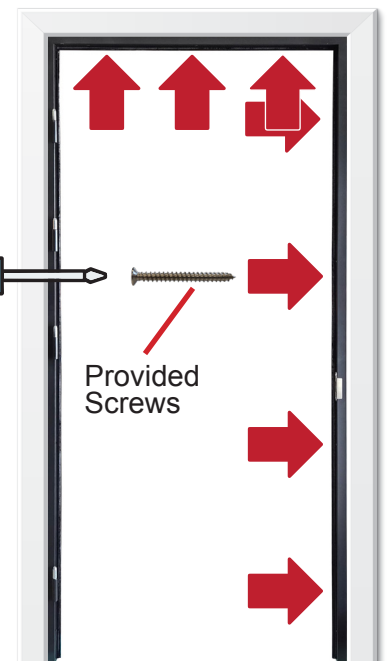
1. Close the door and **inspect the gaps at the top and strike side.**
2. Pre-drill and install the remaining screws, shimming as needed to achieve even, consistent gaps.
3. Install the provided plastic plug-ins to cover each of the pre-drilled holes.
4. **Check for: Smooth door swing / Proper latching / Correct alignment with the strike.**



A. Attach and test the door swing. Inspect door gaps.



B. Pre-drill holes.



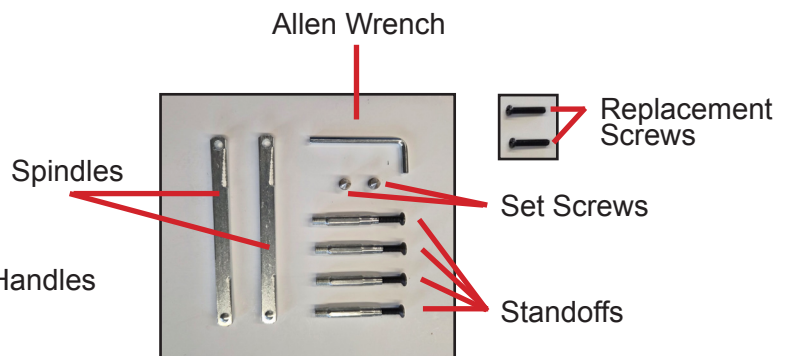
C. Attach door frame to the top and other side of door jamb.

8. Attach Door Handles -

1. Make sure all door handle components are available. NOTE: Some extras components have been included that may not be needed for the installation.



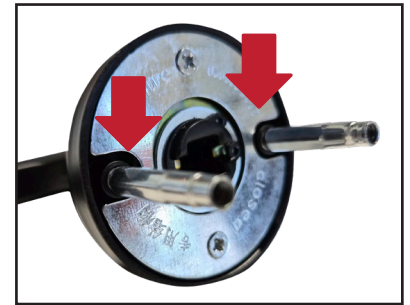
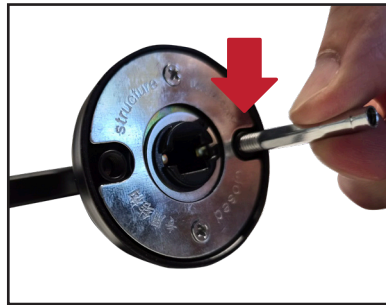
Door Handles



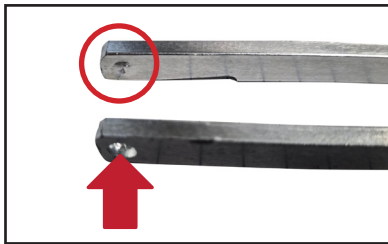
2. Prepare each handle for installation. Grab two of the four standoffs. NOTE: You will only be using (2) standoffs for installation. The other (2) are extras. Remove the screws currently attached to each standoff. During installation, you will be using the shorter screws that are provided ('replacement screws').



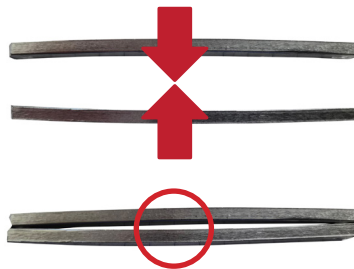
A. Unscrew and remove these bolts from two of the standoffs.



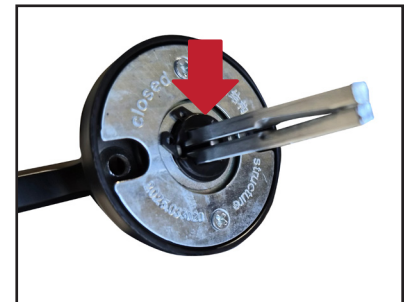
B. Screw in standoffs into the handle that has female threading.



C. Locate both spindels and place together, aligning the dimple with the hole.

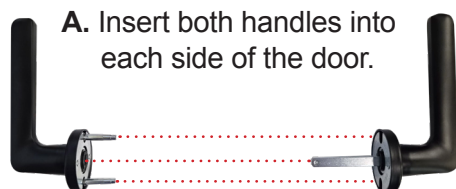


D. There will be a slight bow of the two pieces. This allows tension when inserted into the door handle. This is normal.



E. Insert the paired spindles into the second door handle.

3. Insert each door handle into the door frame, aligning the spindle and standoffs so that they insert into each other. Use the two 'replacement screws' and screw into the two ends of the standoffs. Afterwards, screw in the set screws into the handle.



A. Insert both handles into each side of the door.



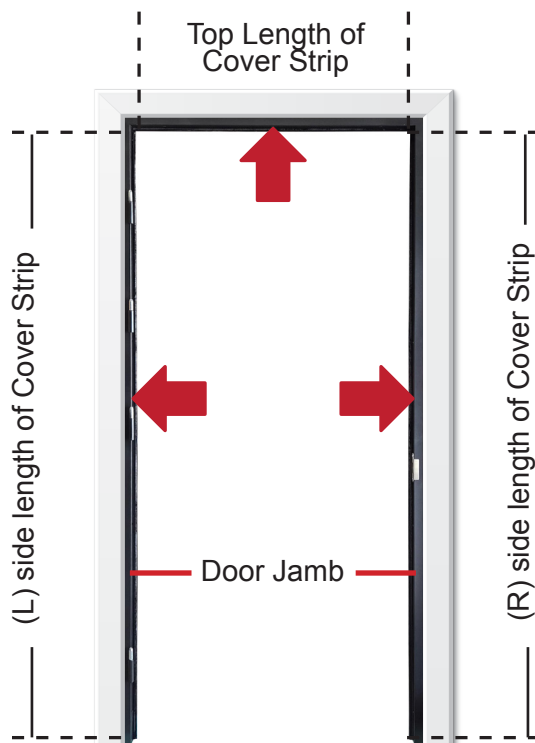
B. Use the two 'replacement screws' and screw into the other side of the standoffs, firmly attaching both handles to the door.



C. Use the two set screws and screw into each door handle. The set screws tighten against the spindle to keep the handle from slipping or rotating independently.

8. Finishing -

1. Once the unit is properly installed, trim excess shims using a utility knife so they sit below the face of the metal frame.
2. Wipe down the metal frame with a clean, damp cloth to remove dust or debris.
3. Mild household cleaners may be used to remove grease or oil.
4. Cover Strip Installation.
5. Cut the supplied cover strips to length for the top and both sides using scissors.
6. Remove the backing from the double-stick tape.
7. Install the cover strip by pressing one edge against the existing jamb then pressing the face firmly onto the metal frame.



A. Cut-To-Size and apply the cover strips to the door jamb.



Enjoy Your New Steel Interior Prehung Door!